

# Electrostatic Discharge Simulators

## Maintenance support discontinued models

ESD Simulators that have been used by our customers for many years is currently marketed as new models.

We reserve the right to refuse product repair and maintenance requests for products with 8 years passed after delivery and 5 years after sales discontinued, according to the product warranty regulations.

Below, we inform about the maintenance support status of ESD Simulators and ESD Guns, and its respective successor models.

【Maintenance Support Status: ESD Simulator Main Unit (As of September 2024)】

MODEL	SALES STATUS	MAINTENANCE STATUS
ESS-630 series	discontinued in 1989	discontinued
ESS-200AX	discontinued in 1999	
ESS-100L	discontinued in 1997	
ESS-100LA	discontinued in 2000	
ESS-2000 / 2002	discontinued in 2009	
ESS-2001	discontinued in 2002	
ESS-2000AX	discontinued in 2013	
ESS-2002EX	discontinued in 2011	
ESS-S3011 / B3011	discontinued in 2016	
ESS-B3011A	discontinued in 2024	available
ESS-S3011A	current model	
ESS-PS1	current model	

【Maintenance Support Status: ESD Guns (As of September 2024)】

MODEL	SALES STATUS	MAINTENANCE STATUS
TC-815C	discontinued in 1995	discontinued
TC-815D	discontinued in 2000	
TC-815D(F)	discontinued in 1999	
TC-815ISO	discontinued in 2009	
TC-815P	discontinued in 2004	
TC-815R / 815-330/2K	discontinued in 2014	
TC-815RE2 / 815S	discontinued in 2015	
GT-30R	discontinued in 2016	
GT-30R2K / 30R330 / 30R3302K	discontinued in 2016	
GT-30RA	current model	available
GT-30R3302KA		
GT-31S		

【ESD Simulator Ed.1 Calibration Discontinue Notice】

Both ESD standards IEC 61000-4-2 Ed.1 and ISO 10605 Ed.1 have been revised to Ed.2 in 2008. Due to the aging of standard instruments used for measurement and the termination of service support for the target models, it is difficult to continue providing quality service. Therefore, we stopped accepting calibrations for IEC 61000-4-2 Ed.1 and ISO 10605 Ed.1 as of the end of December 2022.

### DISCONTINUED MODELS



ESS-630A



ESS-200AX



ESS-100L



ESS-2000



ESS-2001 / 2002



ESS-2000AX / 2002EX



ESS-B3011

Customers with ESD Simulators and/or ESD Guns with discontinued maintenance support, please consider replacing it with a current successor model.

# CURRENT SUCCESSOR MODELS INTRODUCTION

Electrostatic Discharge Simulator

## ESS-PS1 & GT-31S (ESD Gun)

Make your electrostatic testing easier!

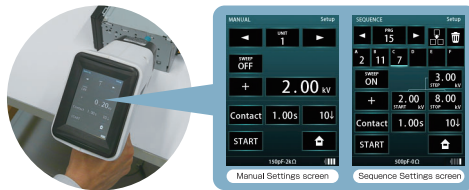
- IEC 61000-4-2 / ISO 10605 Standards compliance.
- Touch panel operation discharge gun improves operability.
- Portable battery unit offer convenient testing for large equipment.
- Pre-check function for simple pre-start inspection to ensure correct testing.
- One-touch replacement of CR unit.

Greater freedom in testing!

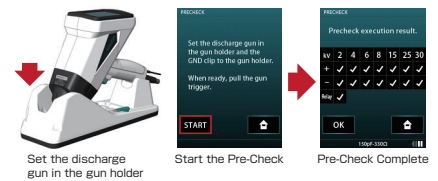
Touch panel and portable battery for easier testing



Easy setting of test conditions  
Intuitive Operation Screen



More reliable testing  
Pre-check Function



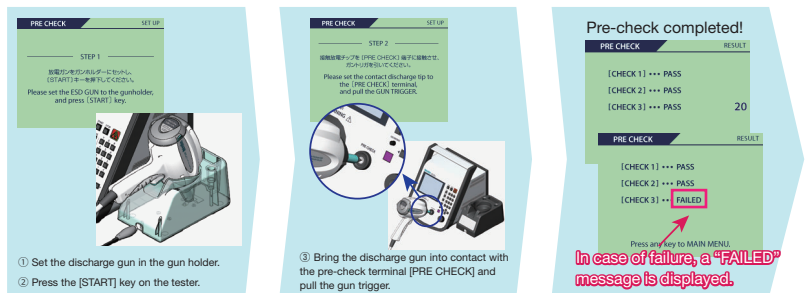
Electrostatic Discharge Simulator

## ESS-S3011A & GT-30RA (ESD Gun)

Free you from the hassle of testing by the pre-check function and the weight reduction of the discharge gun.

- IEC 61000-4-2 / ISO 10605 Standards compliance.
- Ten-key & Rotary knob to ease the setting.
- Pre-check function for simple pre-start inspection to ensure correct testing.
- One-touch replacement of CR unit.

Achieve more reliable test!  
Equipped with "3 Pre-check Functions"



[Check 1] High-voltage power output check: Check the error from the set value.  
[Check 2] Insulation defect check: Checks for defective insulation withstand voltage.  
When the discharge gun is placed in the attached gun holder, you can check the output of the high-voltage power supply and check for insulation defects.  
[Check 3] Discharge relay operation check: Check the relay for wear.  
Check the wear of the discharge relay by bringing the discharge gun into contact with the check terminal and discharging.

\* Designs, appearances and specifications on the products are subject change without notice.