

MERCURY RELAY TYPE IMPULSE NOISE SIMULATOR

Notice of repair service termination in 2025.

Thank you for using our mercury relay type impulse noise simulators for many years. The INS-4020/4040 and INS-AX2 series of impulse noise simulators will cease to be available for repair at the end of 2025.

Currently, we are offering INS-S220/S420 new models with semiconductor relay system, which is introduced on the reverse side of this paper. We will continue to strive for the development of better products and look forward to your continued patronage.

※ Repair and mercury relay replacement for simulators installed before 2007 has ended.



INS-4020/4040



INS-AX2 series

【 Maintenance (repair) availability for models other than those listed above 】

All models other than those listed above are no longer available for repair, mercury relay replacement, or parts sales. For calibration, please consult your local distributor, but since the products servicing is discontinued, we will not be able to provide repair support in the event of a malfunction.



INS-4x0#/43x0# series



INS-400L



INS-4001



INS-x00AX series

※ One-digit number comes in "X". An alphabet letter may come in "#".

Customers of Impulse Noise Simulators with discontinued maintenance support, please consider replacing it with a current successor model.

CURRENT SUCCESSOR MODELS INTRODUCTION

To solve the real trouble in the market

Impulse Noise Simulator (semi-conductor type)

INS-S220 /S420

Mercury free



- Button touch instead of coaxial cable replacing reduces pulse width setting time.
- Common mode/normal mode tests are easily switched by short plug.
- "Test time setting" new function simplifies test time setting.
- Repetition cycle becomes faster. Due to high repetition, malfunction occurrence rate is up and test time is shortened. (Only INS-S220)
- Various tests are available by using different probes and coupling clamps (option).
- Dedicated software simplifies testing with various test conditions.

Pulse Width setting simplified
Setting time reduced

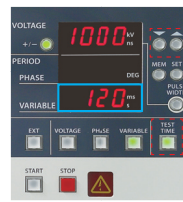


Complicate cable connection setting becomes...

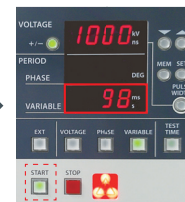


SIMPLE with button operations !

Add TEST TIME switch
Test time can be set



Example) Press the TEST TIME switch and use the ΔUP/▽DOWN switch to set the test time to 120s.



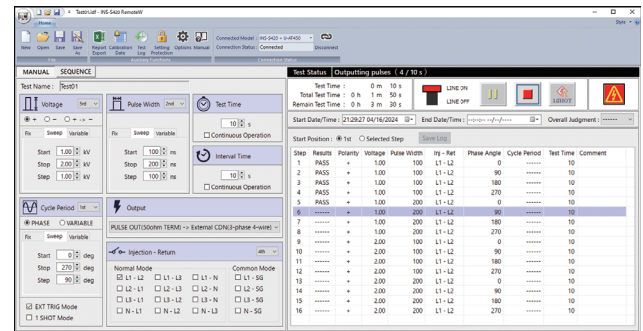
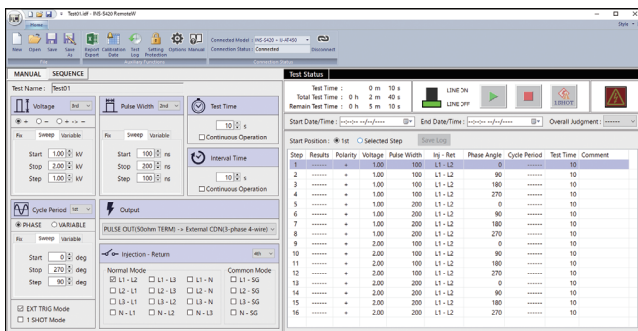
Press the START switch to conduct the test with a test time of 120s!



Continuous testing with 000 setting until the STOP switch is pressed.

PC Software (※ optional)

Testing automation reduces testing time and man-hours



【 Notice of Commencement of Calibration Service for Impulse Noise Testers Accredited by ISO/IEC17025 】

ISO/IEC17025 accredited calibration service for impulse noise testers is available from June 2022.

Applicable models: INS-S220/S420

* Designs, appearances and specifications on the products are subject change without notice.